



# GAT MONTHLY MEMBERSHIP PROGRESS REPORT

Results as of: 6/30/2021

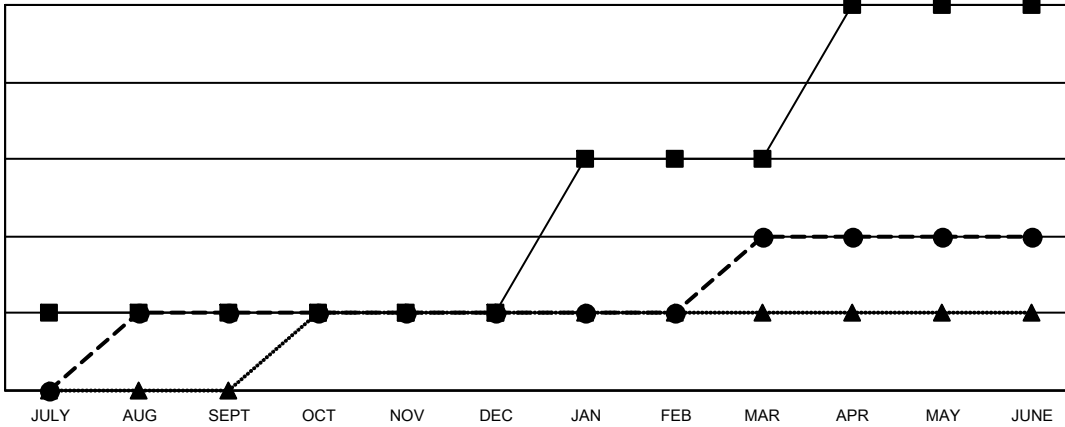
Multiple District 33

LOCATION: MASSACHUSETTS

Clubs			
RESULTS FOR 2020-2021			
QUARTER	NEW CLUB GOAL	NEW CLUBS	DROPPED CLUBS
JULY/AUG/SEPT	1	1	1
OCT/NOV/DEC	0	0	0
JAN/FEB/MAR	2	1	2
APR/MAY/JUNE	2	0	1

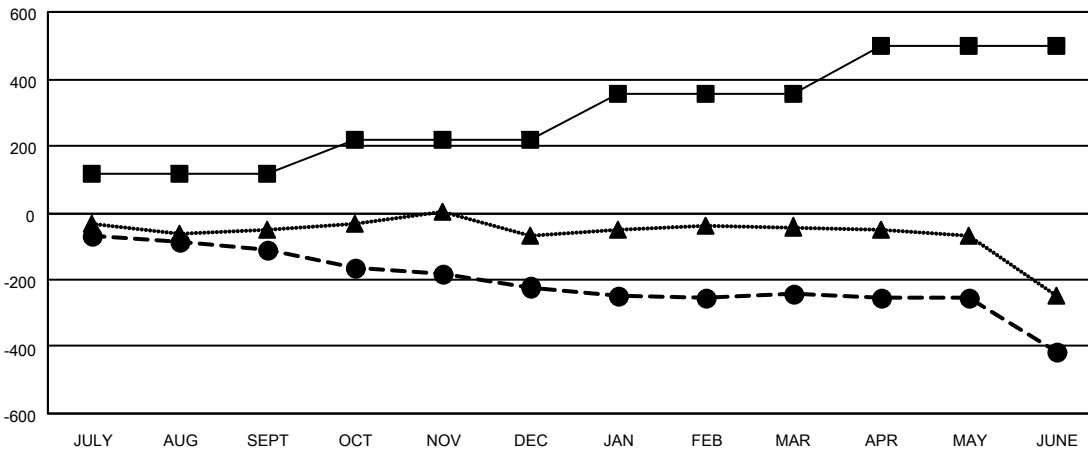
Members			
RESULTS FOR 2020-2021			
QUARTER	MEMBER GROWTH NET GOAL	MEMBER GROWTH ACTUAL	DROPPED MEMBERS ACTUAL (including transfers)
JULY/AUG/SEPT	115	98	183
OCT/NOV/DEC	102	86	172
JAN/FEB/MAR	140	84	98
APR/MAY/JUNE	140	152	297

GOALS AND ACTUAL NEW CLUBS CUMULATIVE



- - CURRENT YEAR GOALS FOR NEW CLUBS
- - CURRENT YEAR ACTUAL NEW CLUBS
- ▲ - LAST YEAR ACTUAL NEW CLUBS

GOALS AND ACTUAL MEMBERS CUMULATIVE



- - MEMBER GROWTH NET GOAL
- - MEMBER GROWTH ACTUAL
- ▲ - LAST YEAR MEMBERSHIP ACTUAL

DROPPED CLUBS: 4	
<u>DROPPED MEMBERS</u>	
DECEASED	133
CLUB CANCELLED	21
OTHER	596
<b>TOTAL</b>	<b>750</b>

100 CLUBS OF 219 ADDED 1 OR MORE NEW MEMBERS

[CLICK HERE FOR CUMULATIVE MEMBERSHIP DATA](#)

<u>GENDER DISTRIBUTION</u>	
MALE	4,141 (63.95%)
FEMALE	2,334 (36.05%)
TOTAL FAMILY UNIT MEMBERS	1,056
FAMILY MEMBERS PAYING HALF DUES	537